

Retour

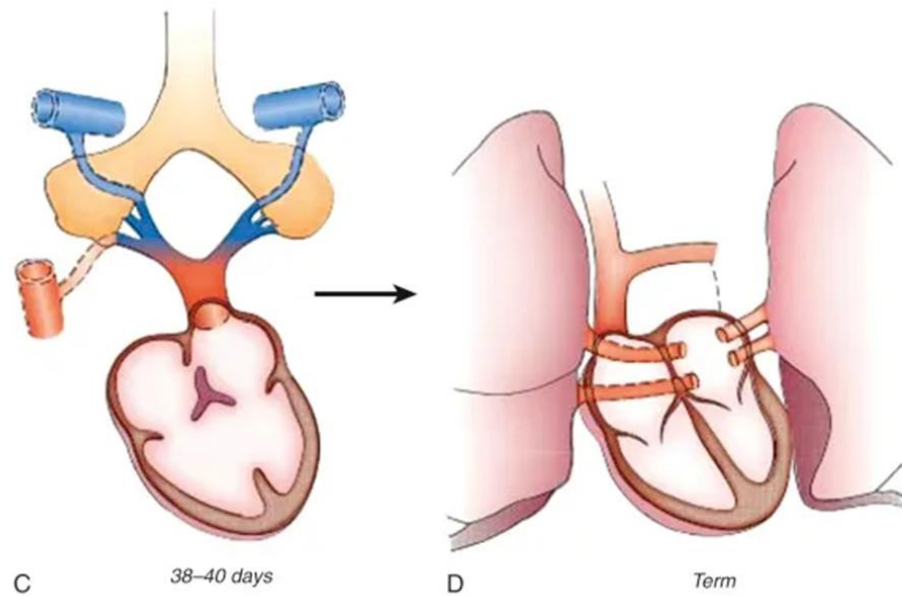
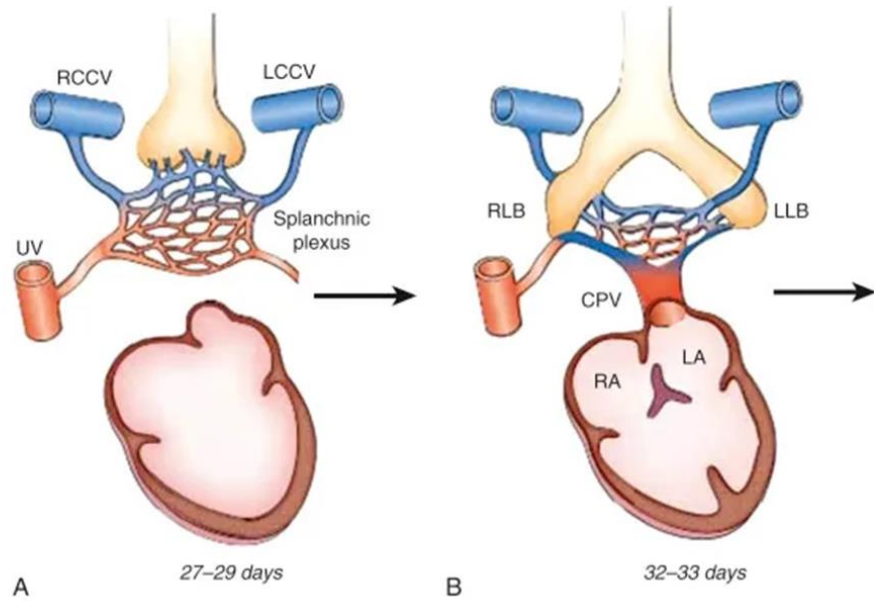
Veineux

Pulmonaire

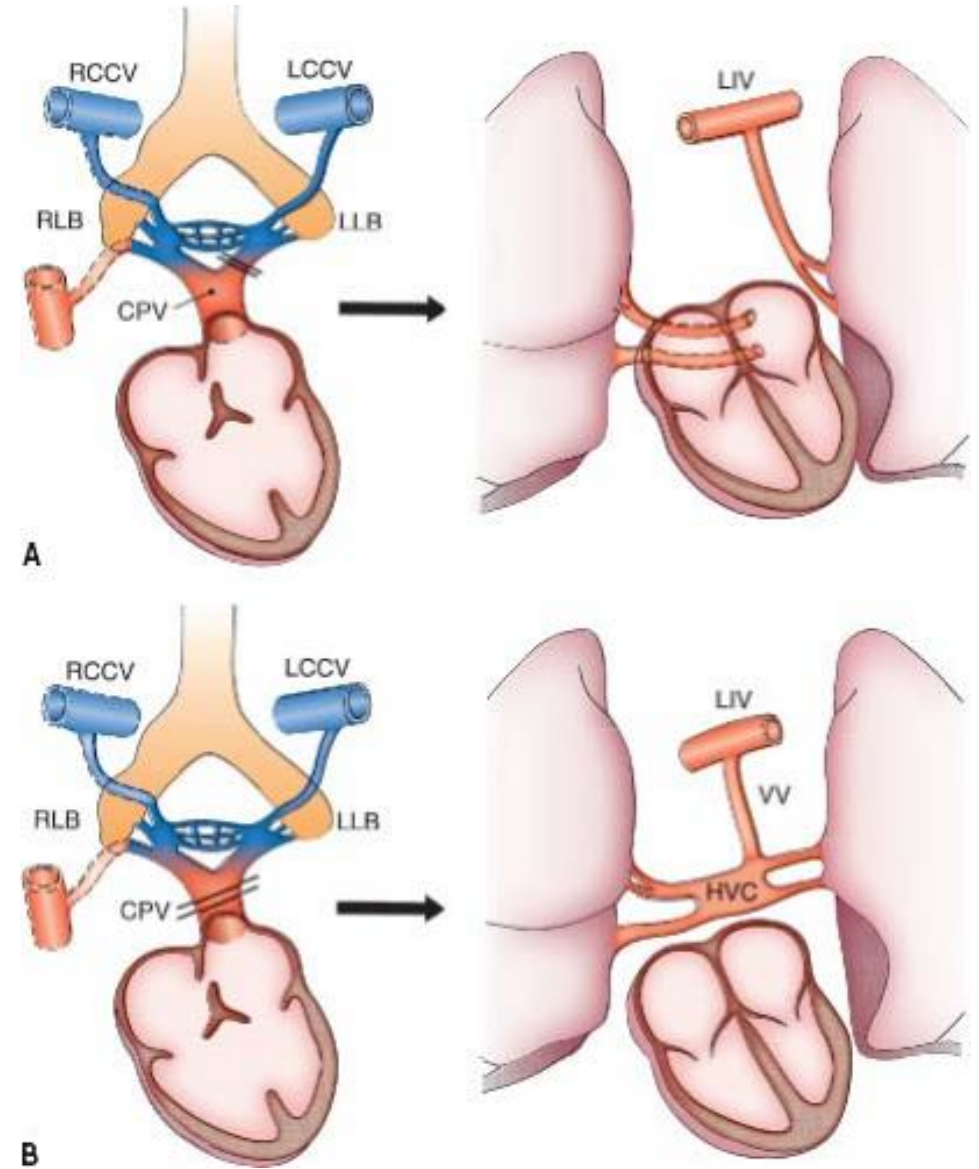
Anormal

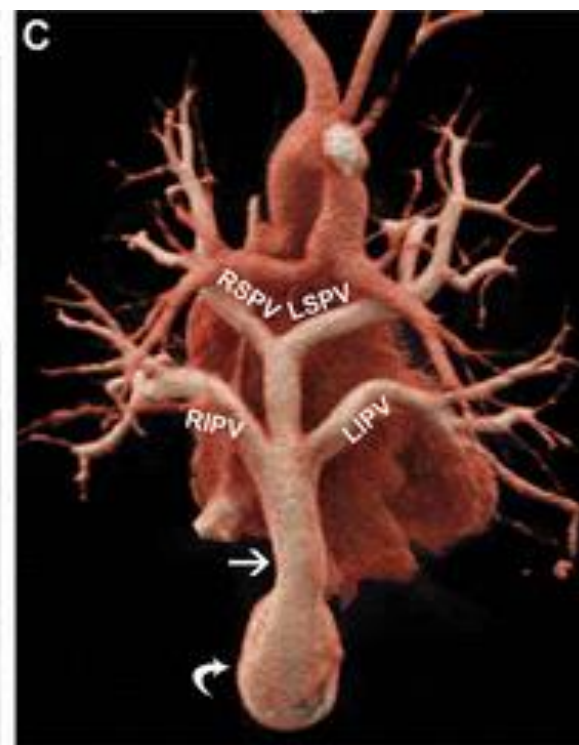
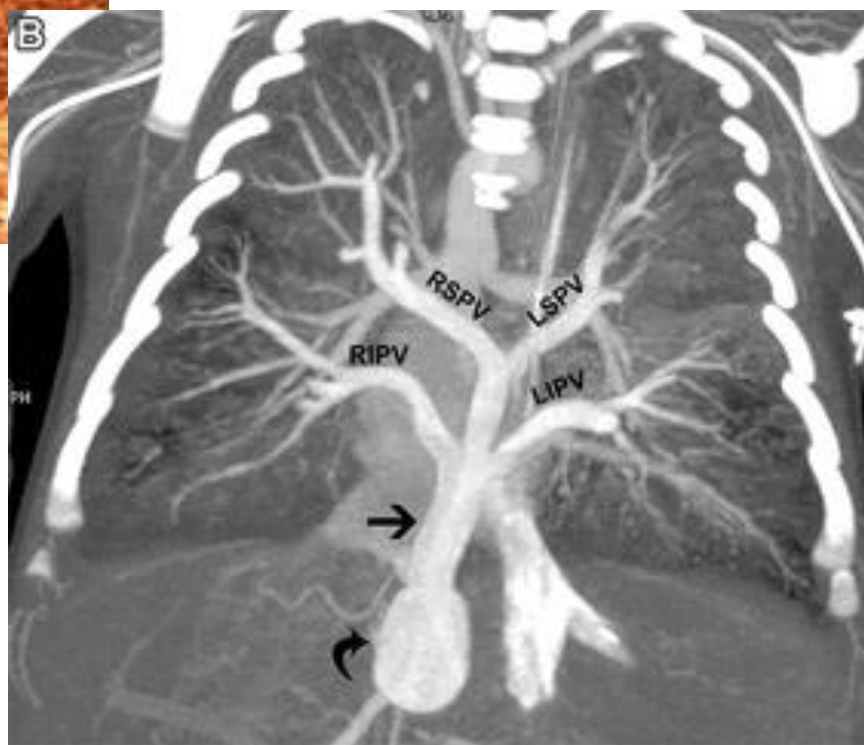
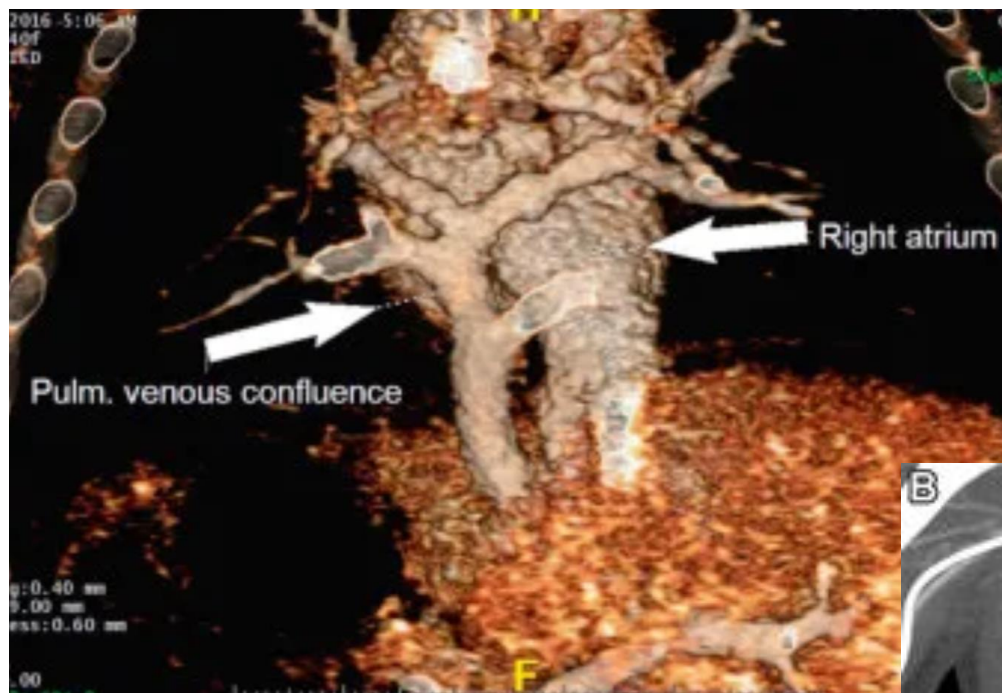
Total

Embryologie

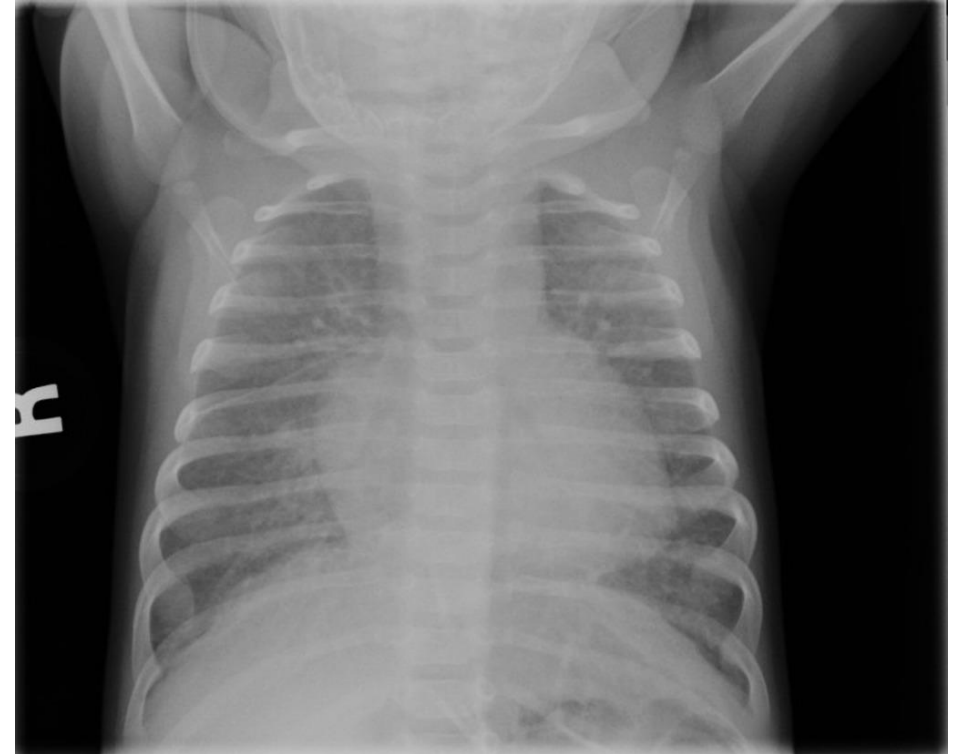
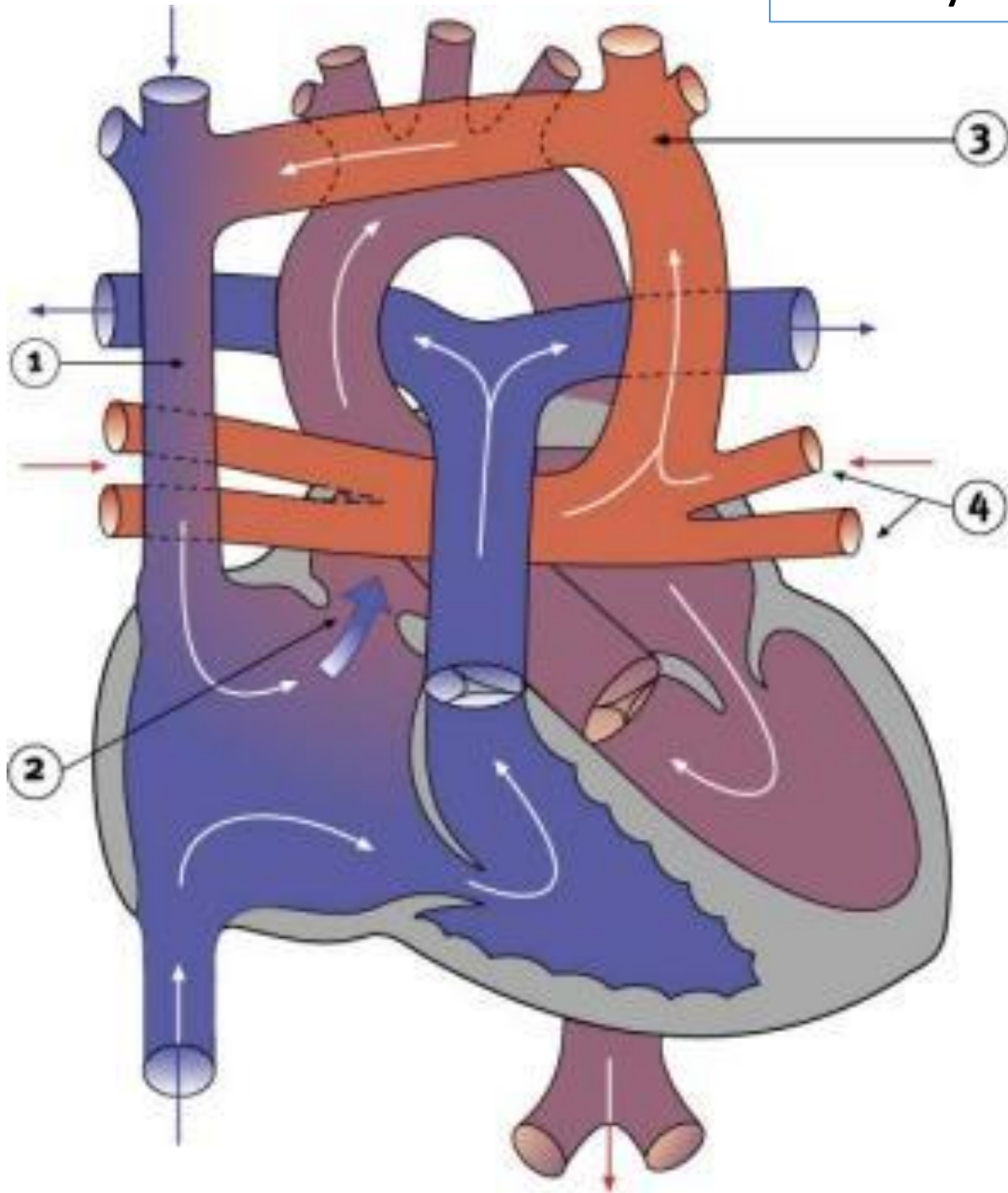


Vs

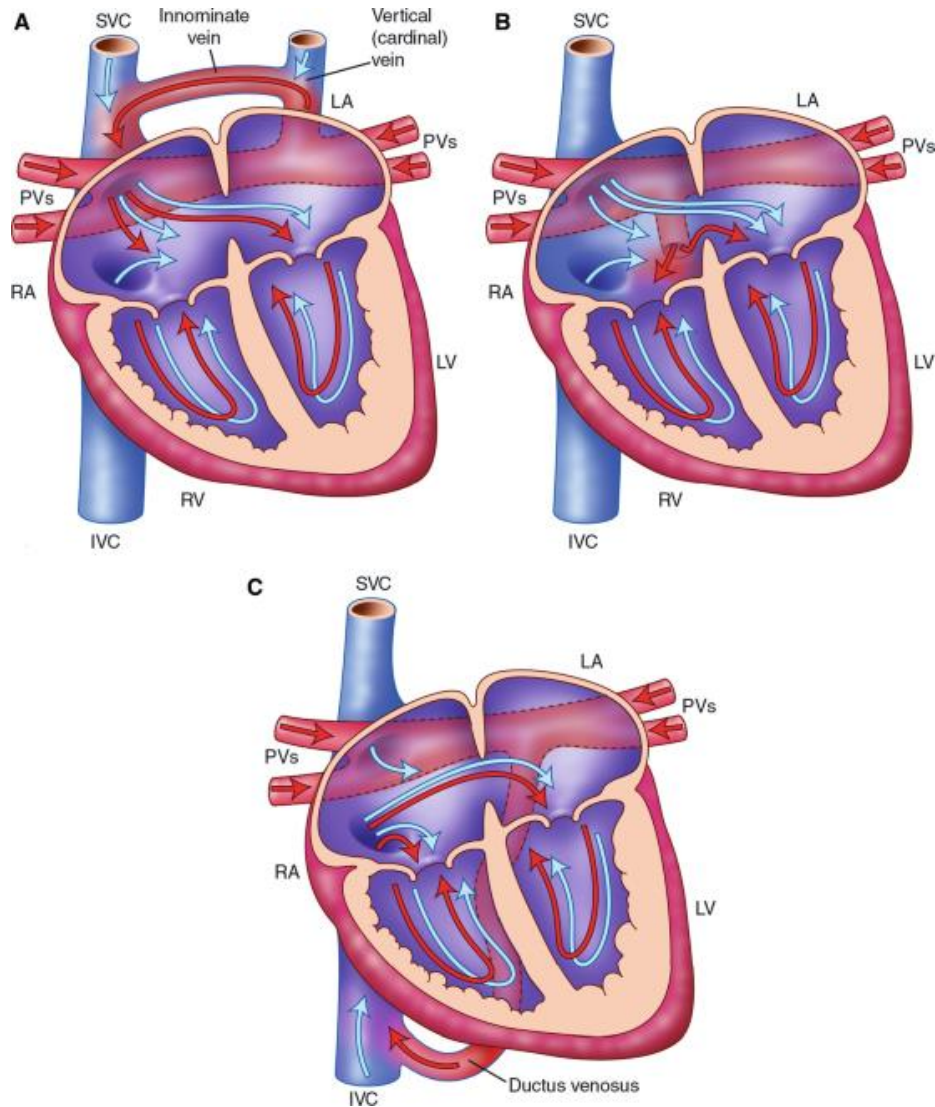




Physiopathologie



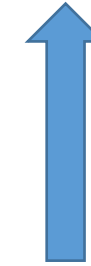
Retour Veineux Pulmonaire Anormal Total (bloqué)



Infra cardiaque

Supra cardiaque

Intra cardiaque



+++

+

--/+ (cia-)

Blocage



1/ Technique de CEC

- Arrêt circulatoire hypothermie profonde
- CEC Hypothermie modérée
- CEC normothermique

intervention:

Incision

Sternotomie médiane

Dissection aorte AP

Bourses

Canulation aortique

Canulation OD

Départ CEC

Ligature CA

Canulation VCI

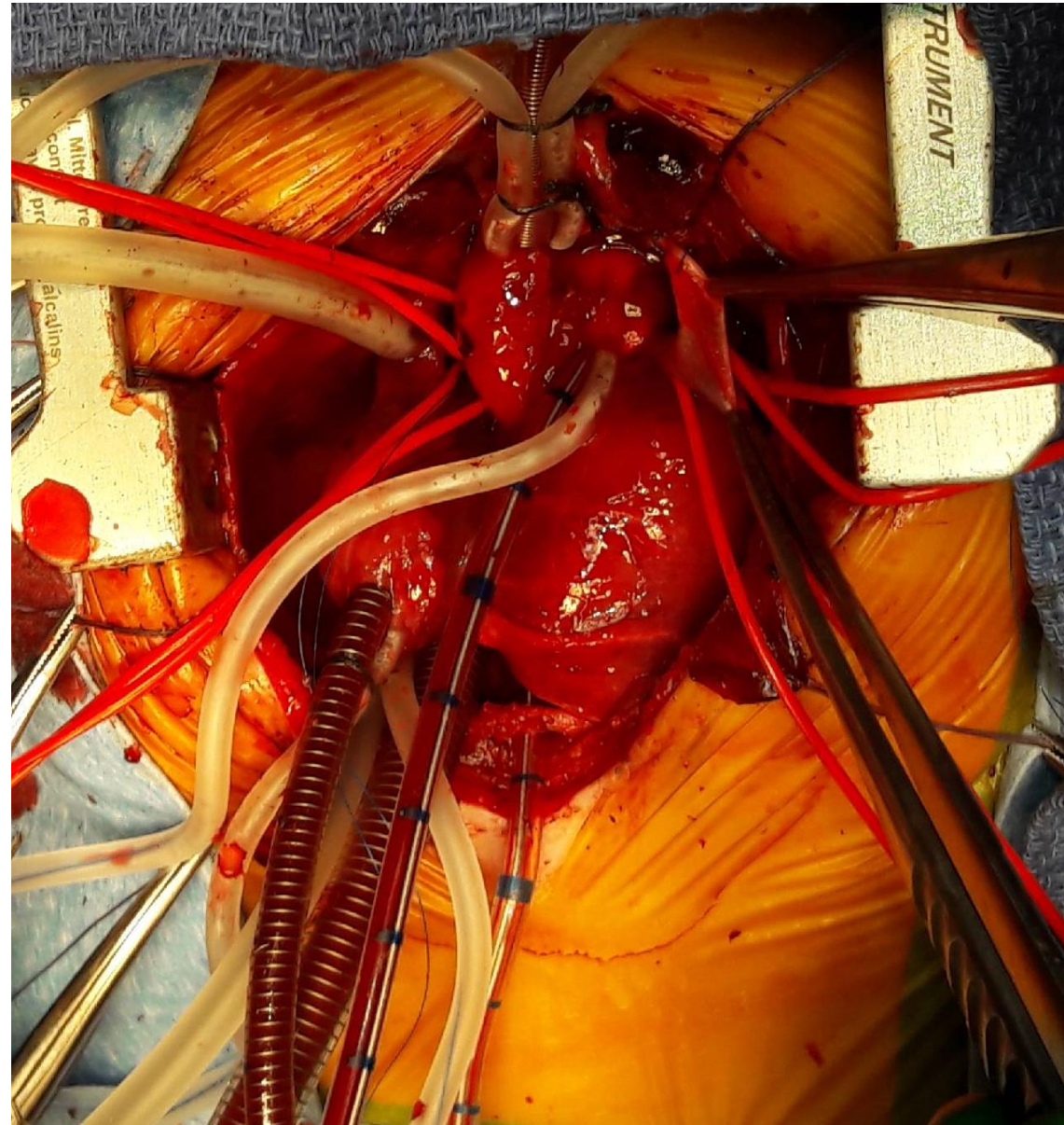
Canulation VCS

Refroidissement +/-

Décharge AP

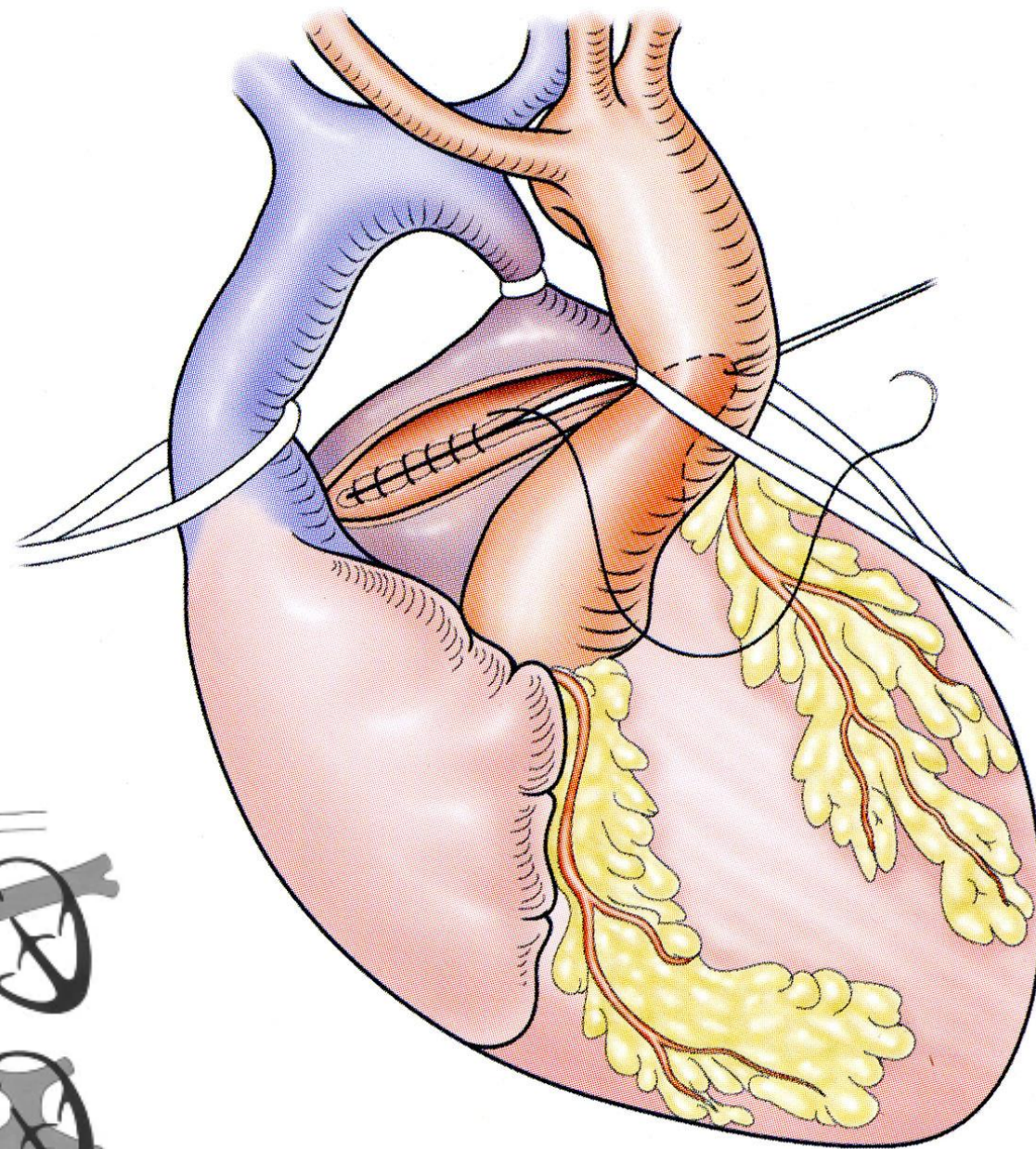
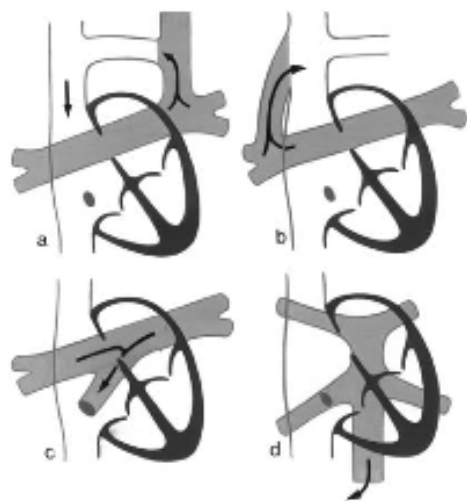
Luxation et dissection du
collecteur, veine de drainage,
veines pulmonaires

à 28° C Clampage aortique et
cardioplégie

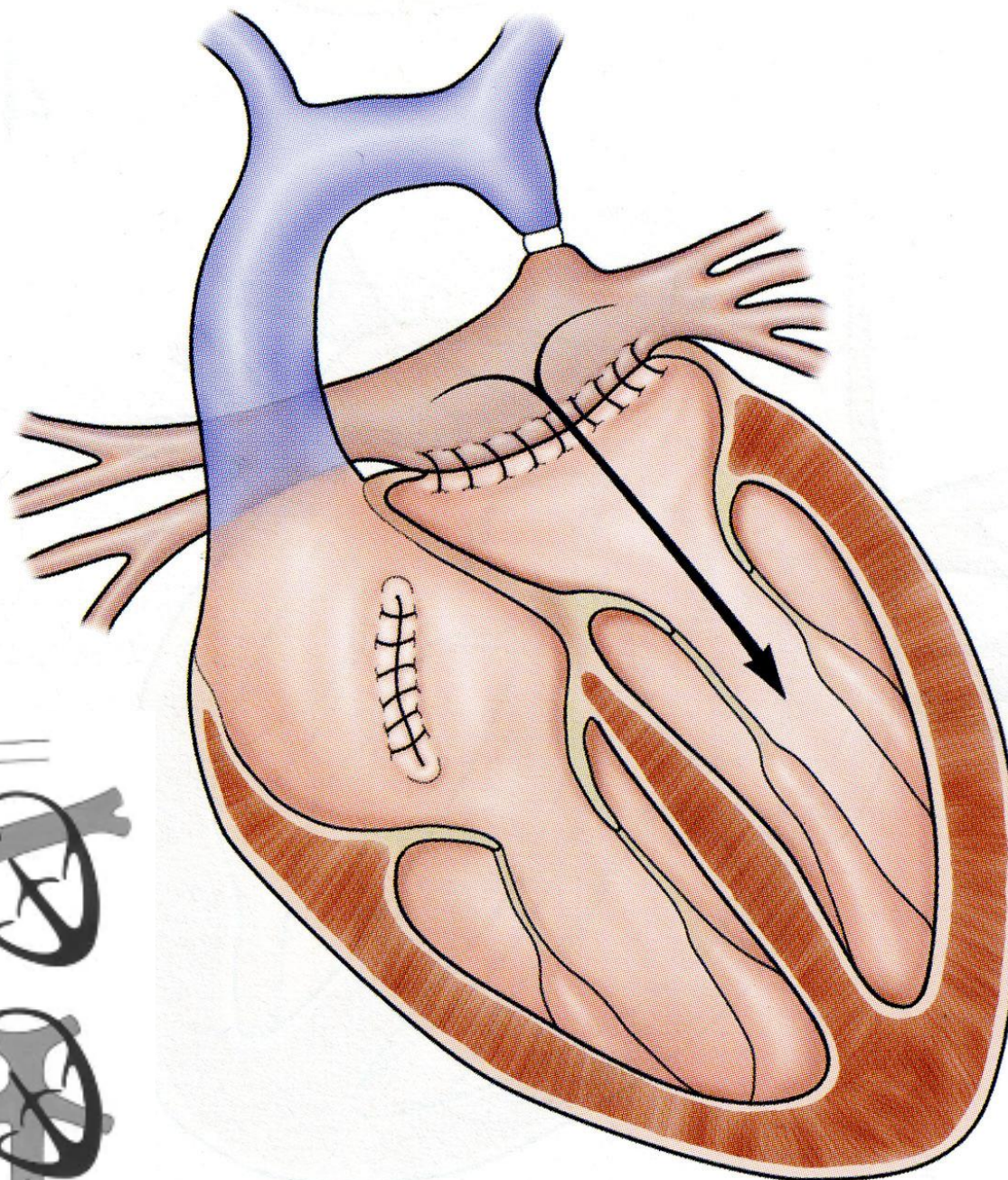
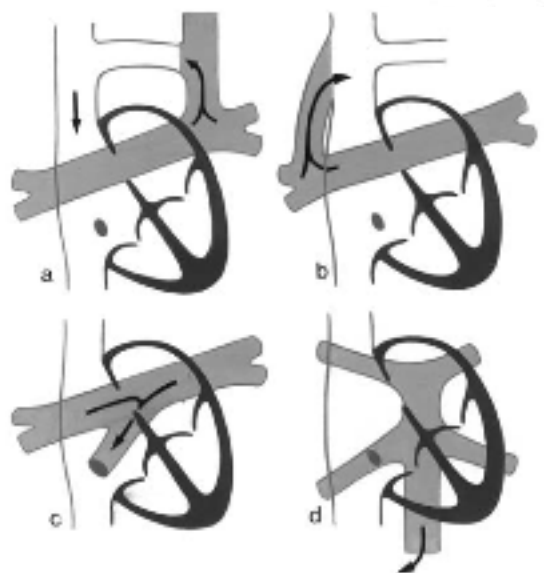


2/ Technique chirurgicale

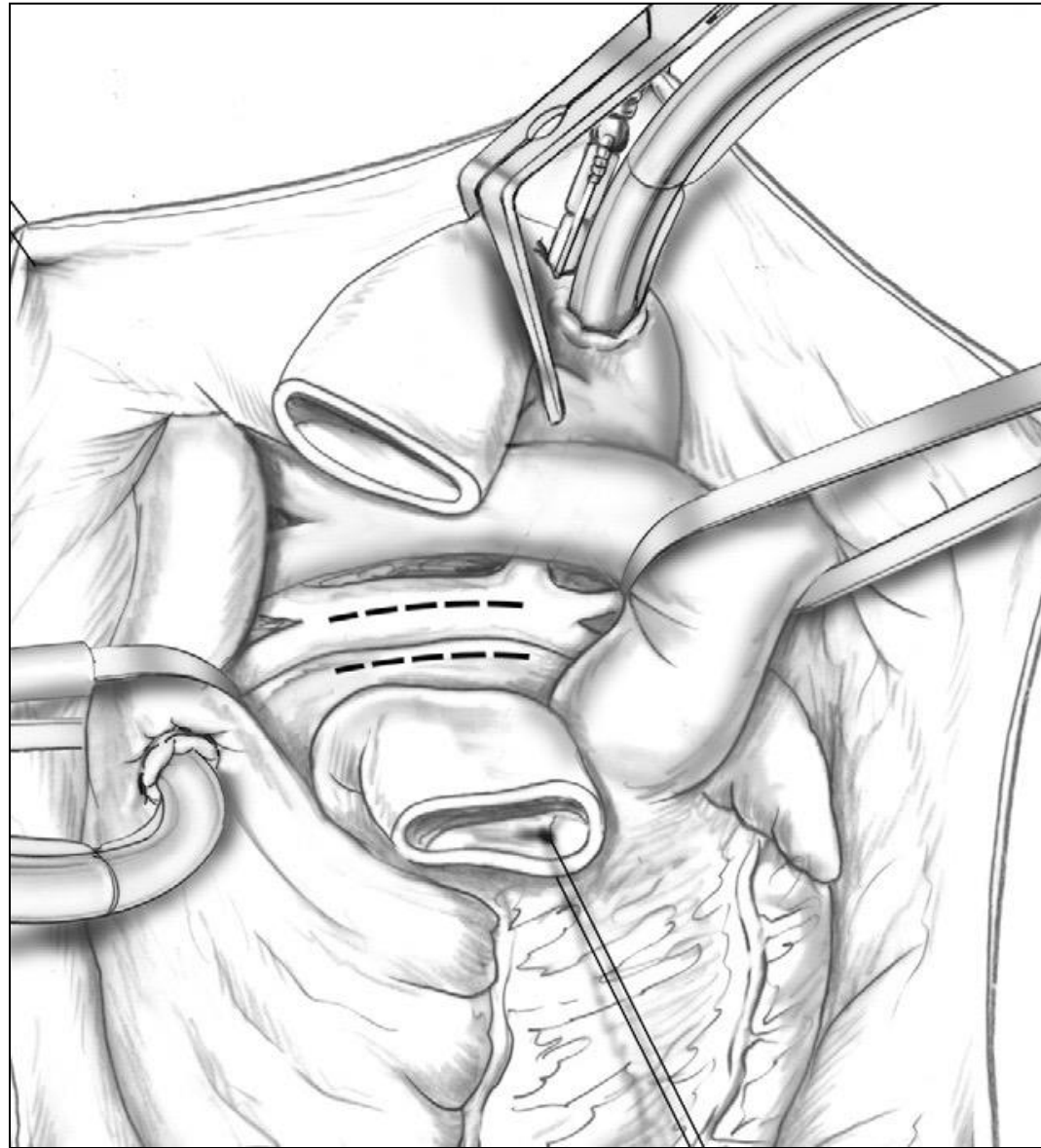
- créer communication collecteur-OG
 - la plus large possible
 - technique variable / type RVPAT



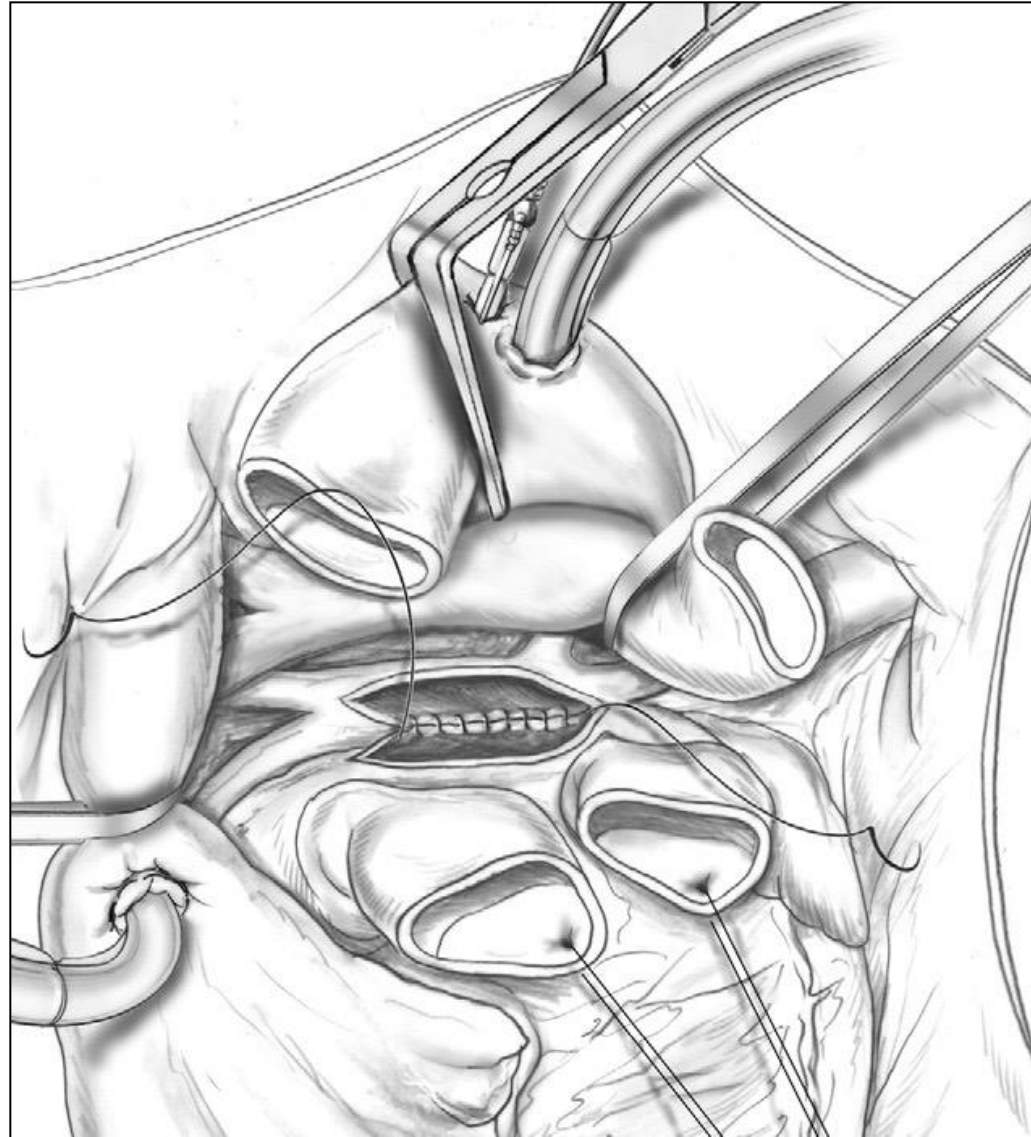
Supra



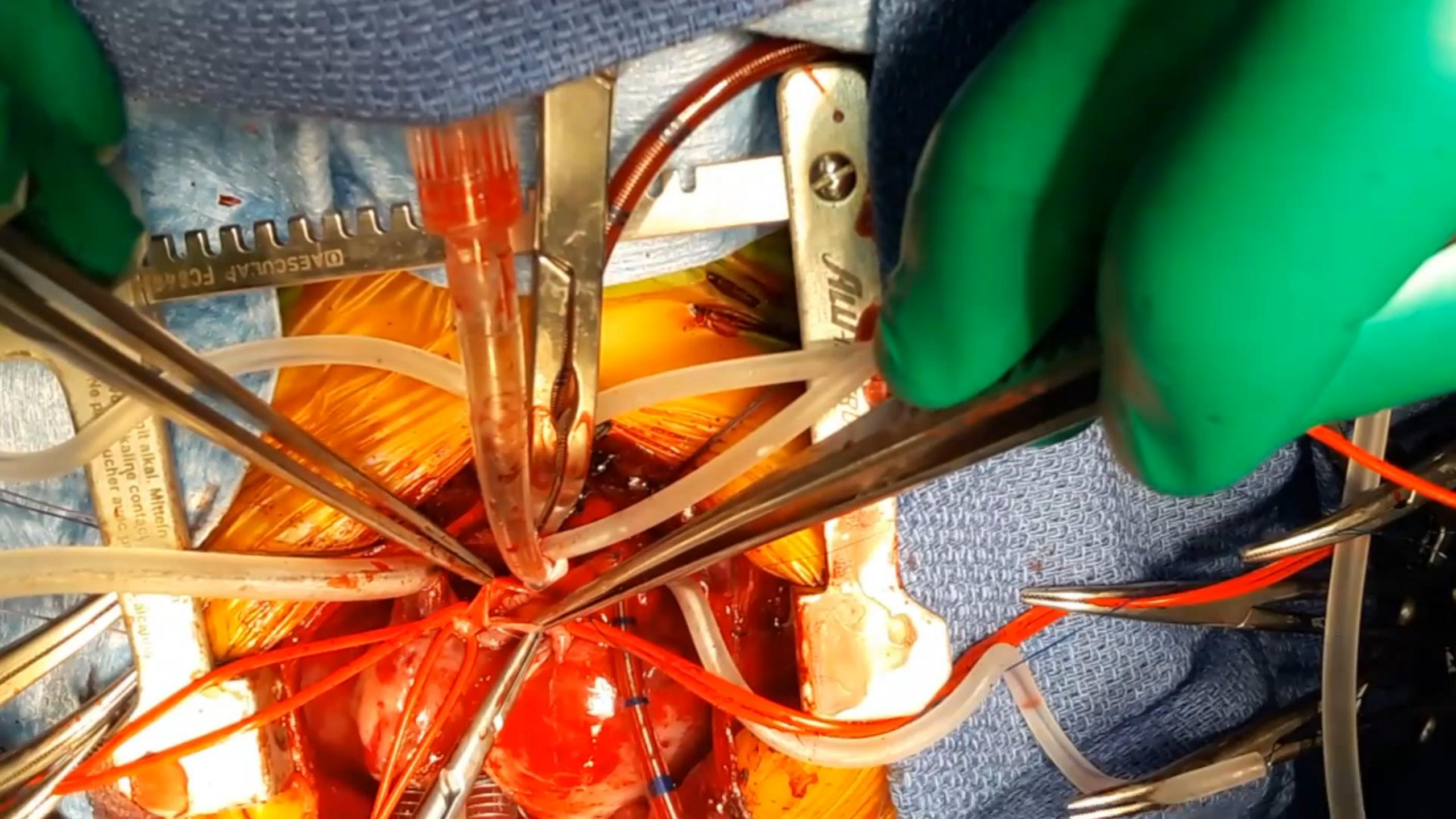
Supra

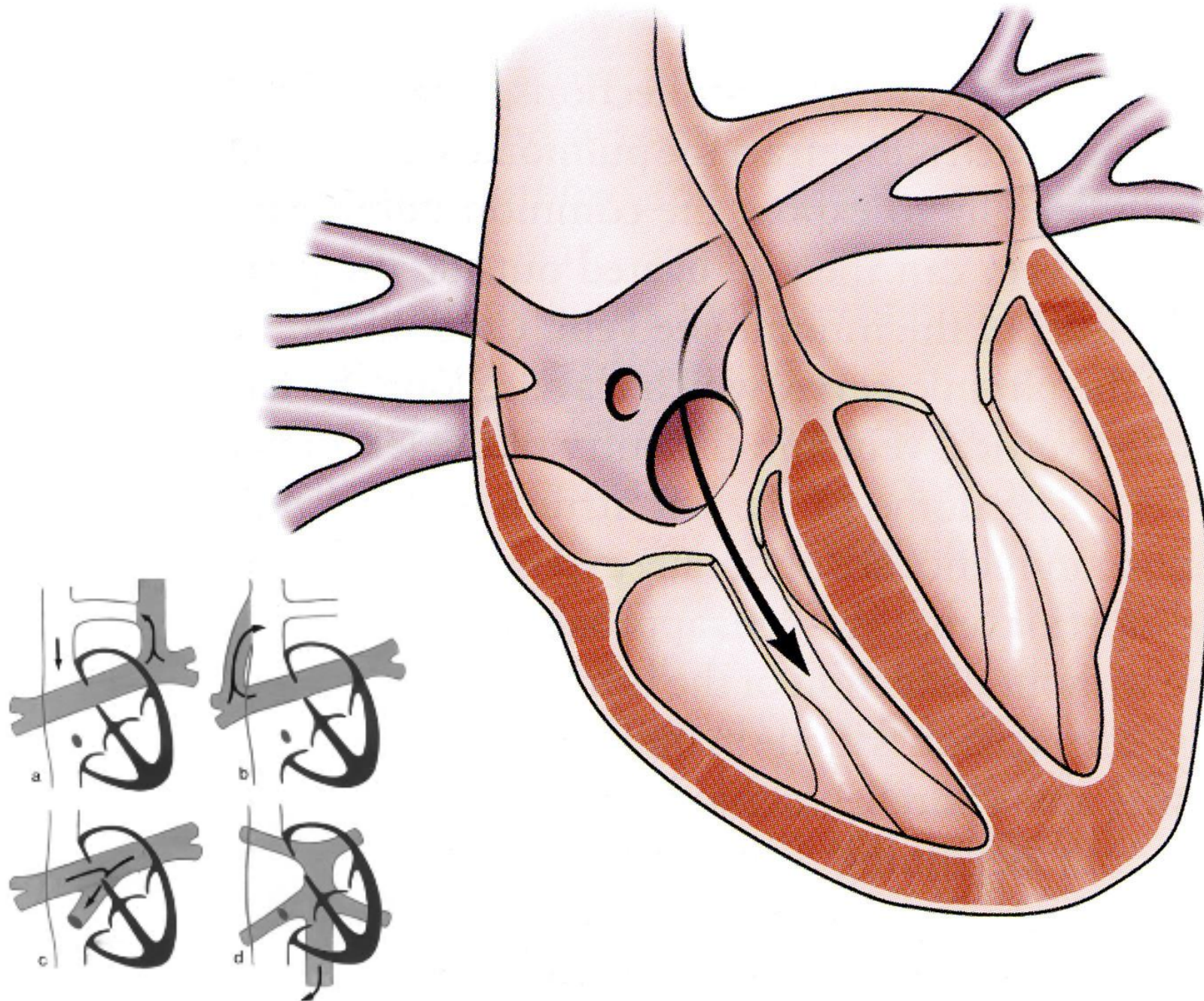


Supra

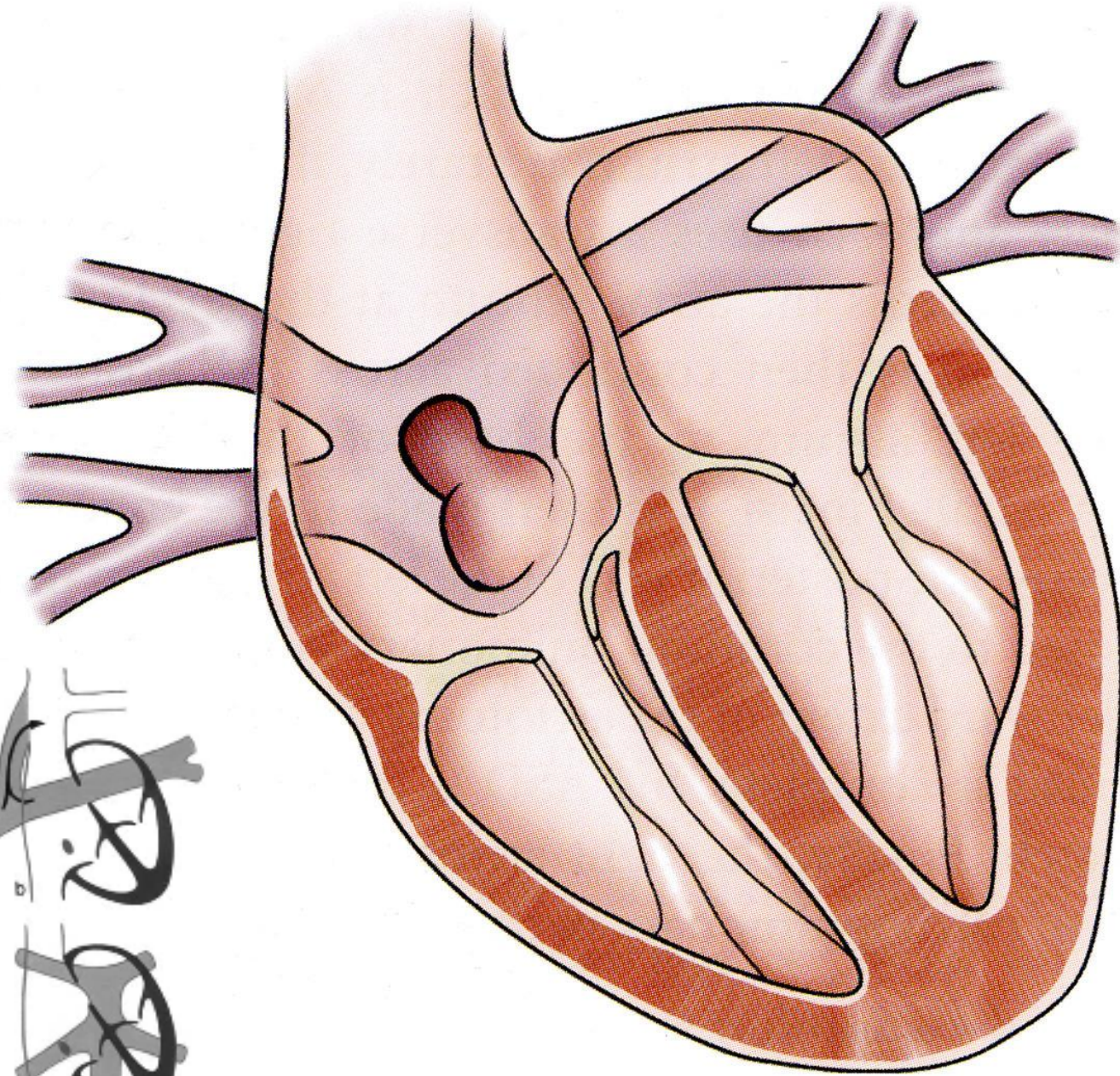
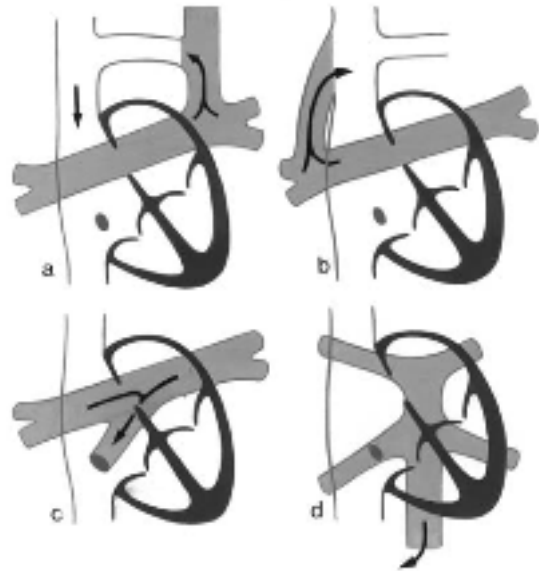


Supra

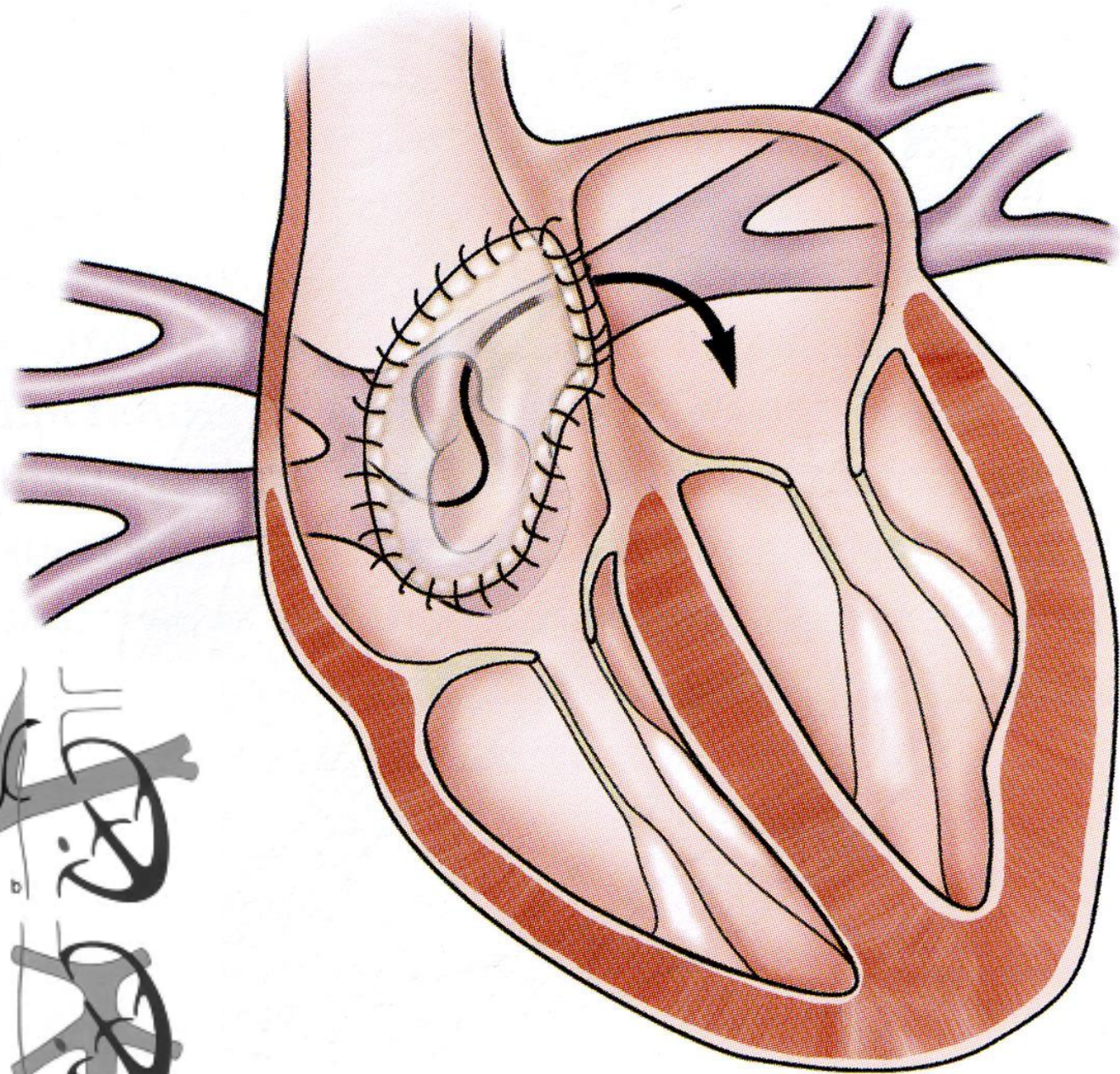
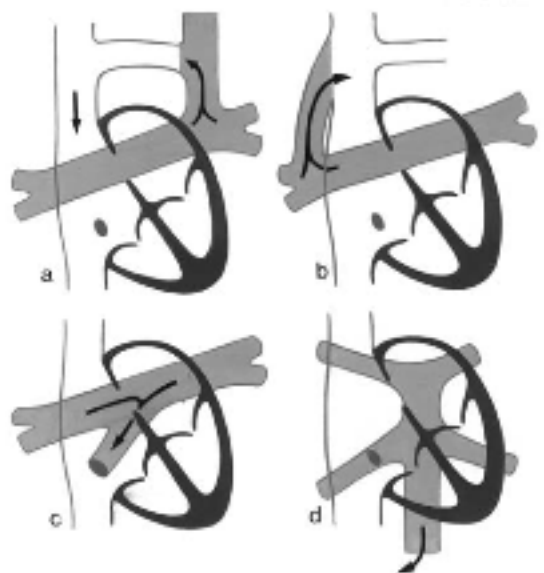


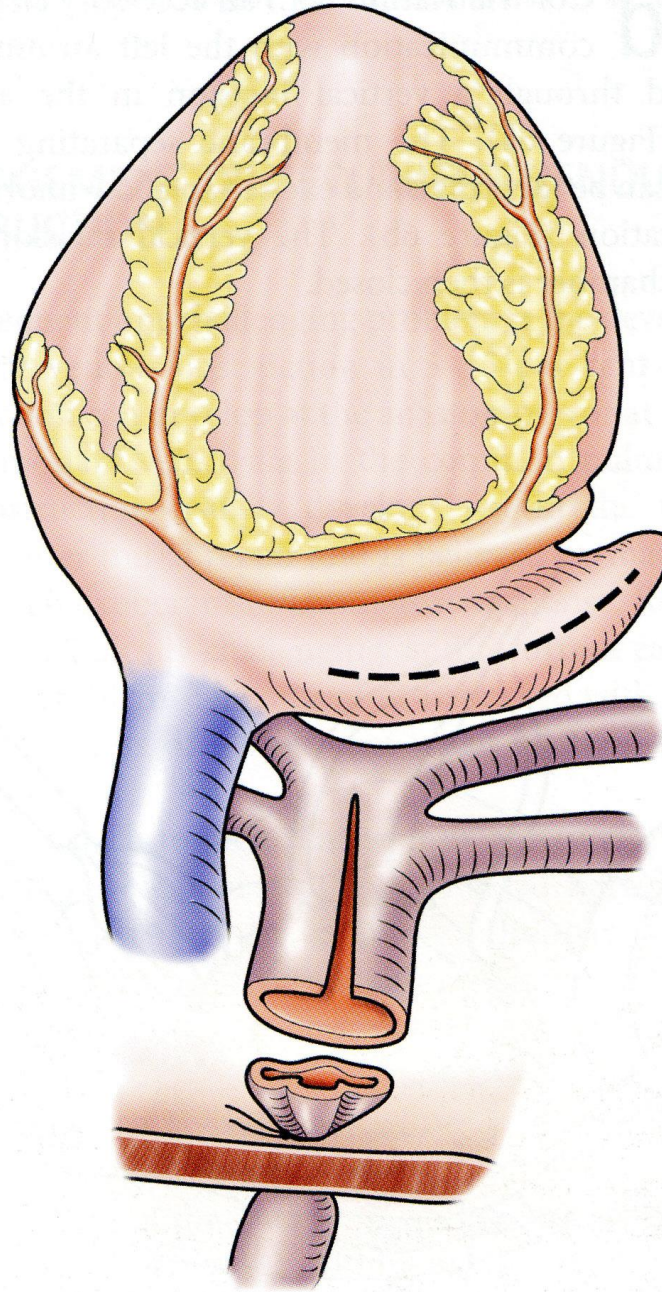
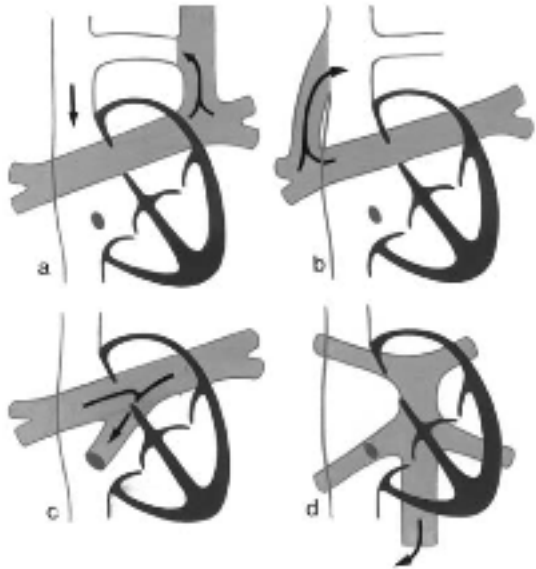


Intra

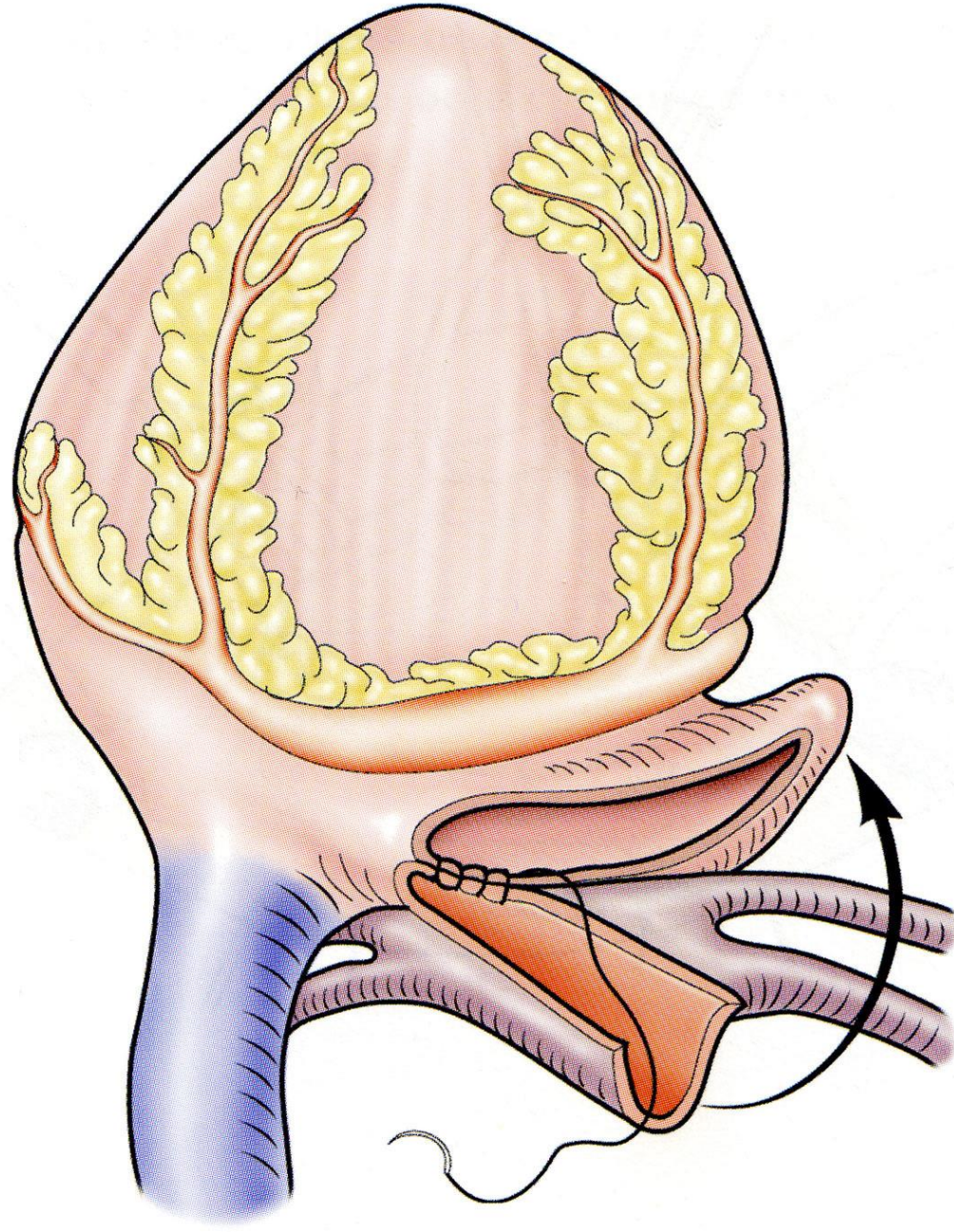
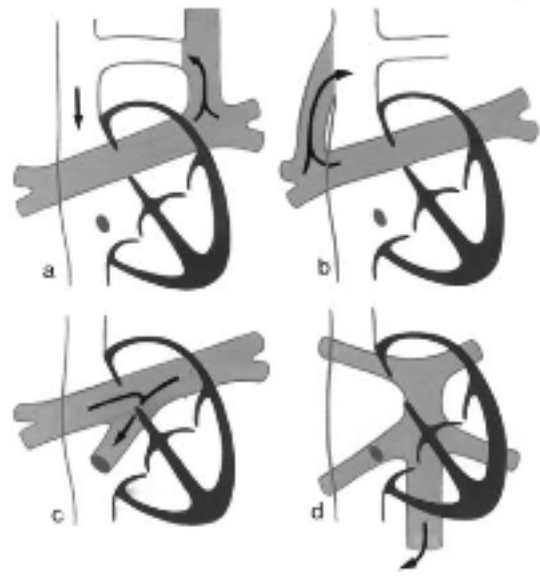


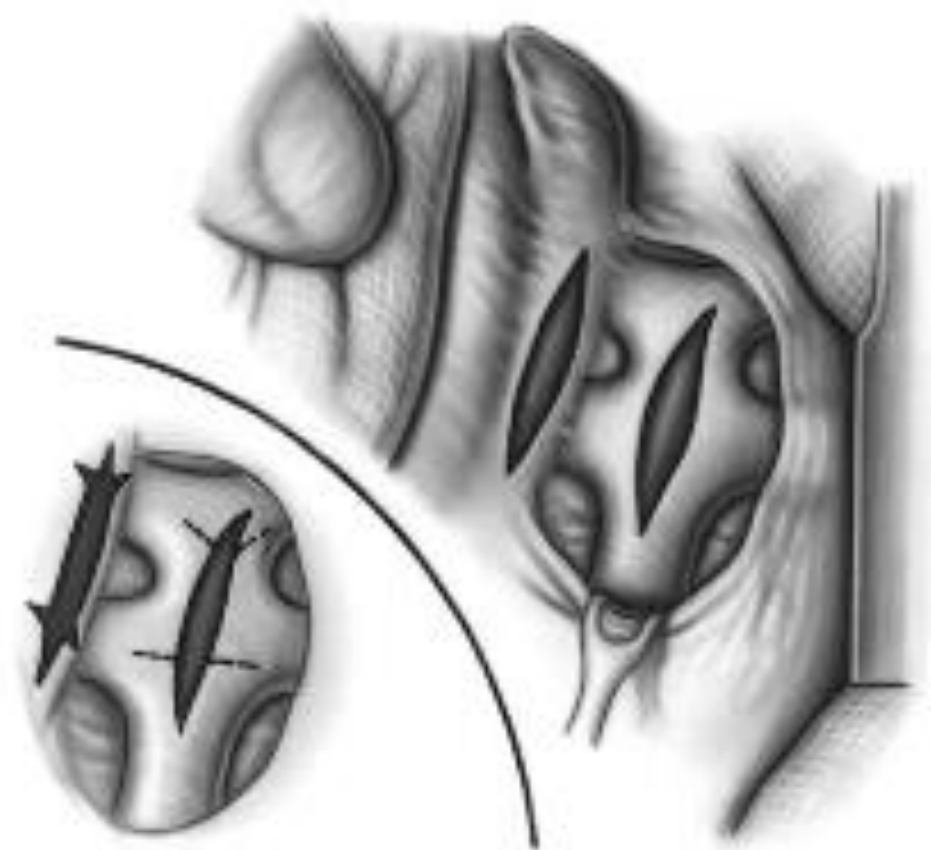
Intra

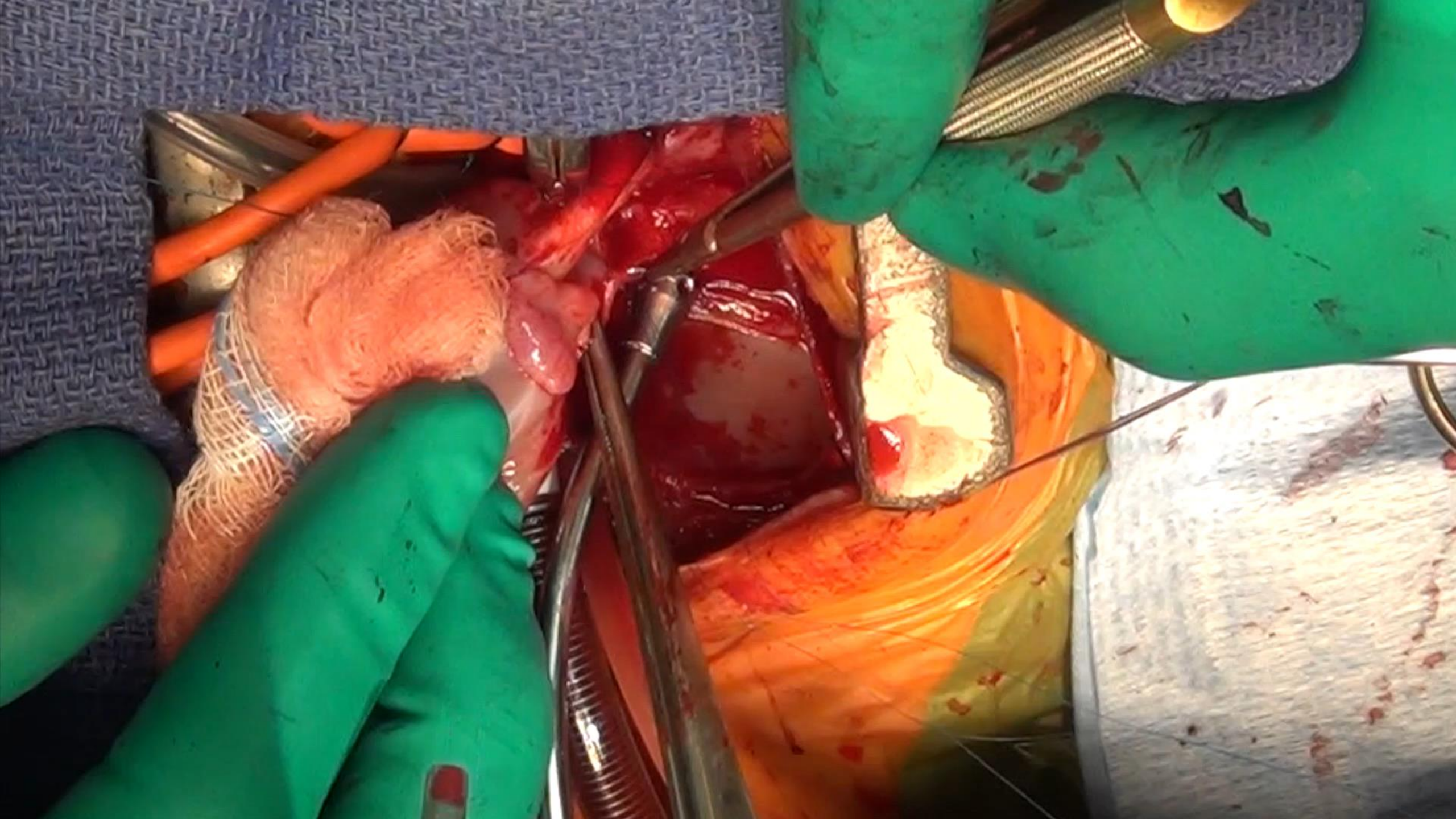




Infra







3/ Technique chirurgicale

- laisser CIA calibrée
 - G/D : VG petit
 - D/G : crise d' HTAP
- prévenir HTAP
 - cathé AP
 - laisser collecteur ouvert ?
 - CEC normothermique

Fin d'intervention:

Vérification de la CIA (fermeture partielle)

Purges

Déclampage

Réchauffement

Sevrage de la CEC (drogues)

ETO

Décanulations

Kt AP

Protamine

Hémostase

Électrodes

Drainage

Fermeture ou plaque

Démêlage ...



Réanimation:

Traitement HTAP

Fonction cardiaque

Dé ventilation

Toilette et Fermeture sternale

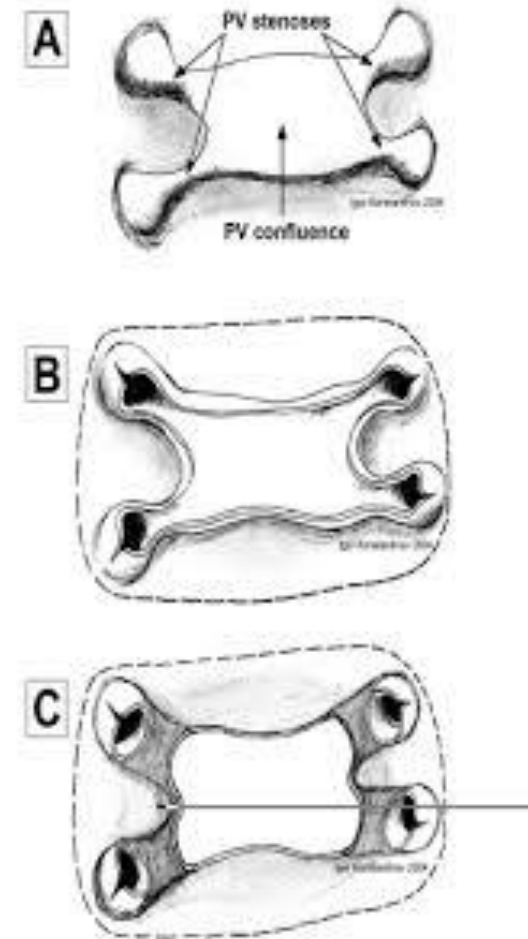
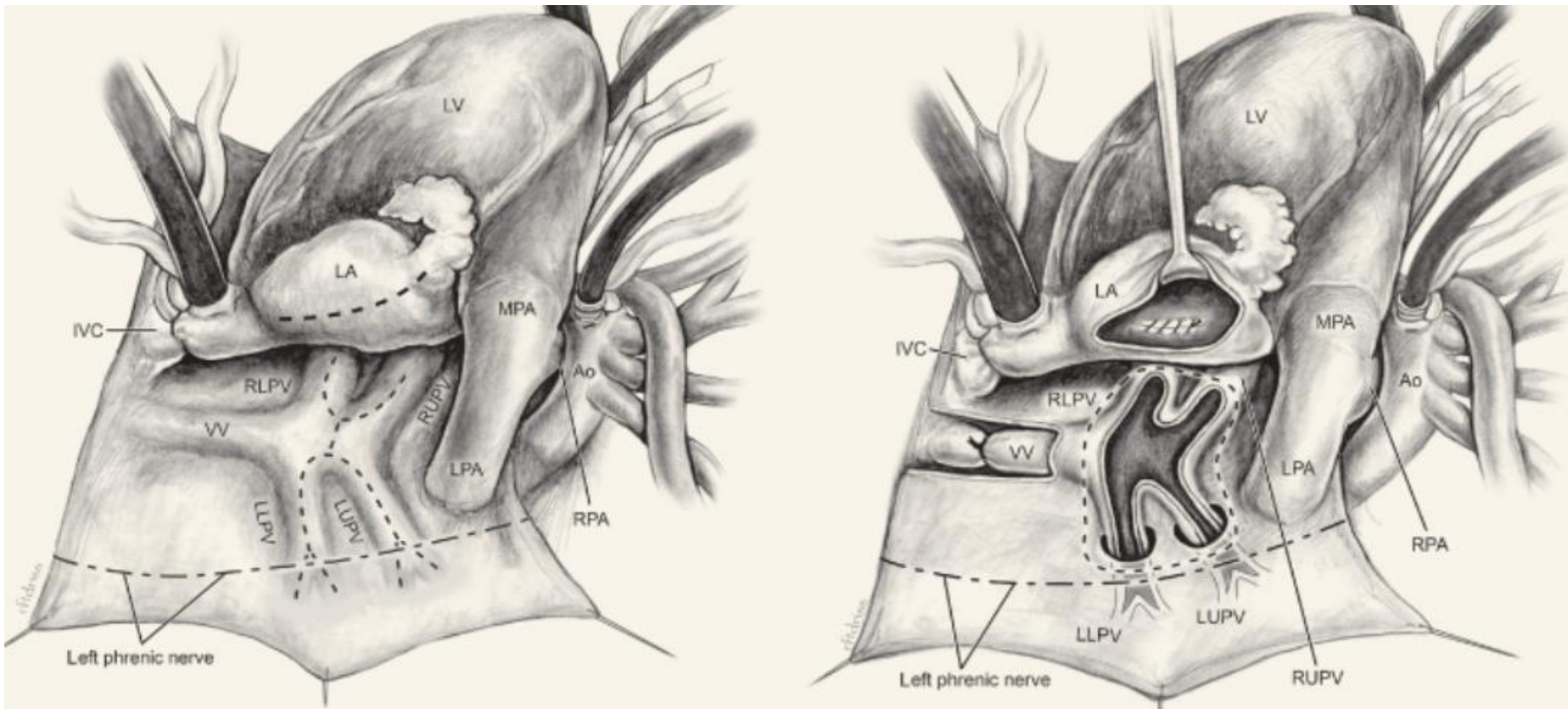
Extubation

Transfert en Néonatalogie

4/ Complication chirurgicale

- **précoce** : obstruction anastomotique
 - détectée par échocardiographie
 - réintervention immédiate
- **tardive** : obstruction veineuse pulmonaire
 - anastomotique : correction
 - veineuse pulmonaire
 - maladie préalable ?
 - traitement difficile

Sutureless



Sutureless

